

# Hamilton Labour Force Snapshot



Workforce Planning Hamilton  
Planification de main d'oeuvre de Hamilton

Data from: Labour Force Survey, Statistics Canada  
[www.workforceplanninghamilton.ca](http://www.workforceplanninghamilton.ca)

## May 2016

### Observation 1



Hamilton CMA's unemployment rate for May 2016 was 5.8 while it was only 5.0 last year in May.

### Observation 2



There were 2,200 less people employed in May 2016 than in May 2015.

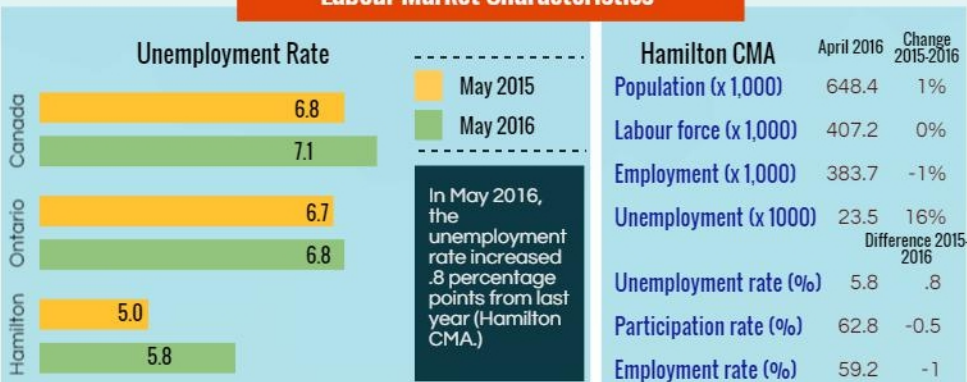
### Observation 3



Hamilton CMA's unemployment rate remained lower than both Canada's and Ontario's.

Unemployment rate: The number of people without work who are available for work, and are actively seeking work. It is a well-known indicator of labour-market health.

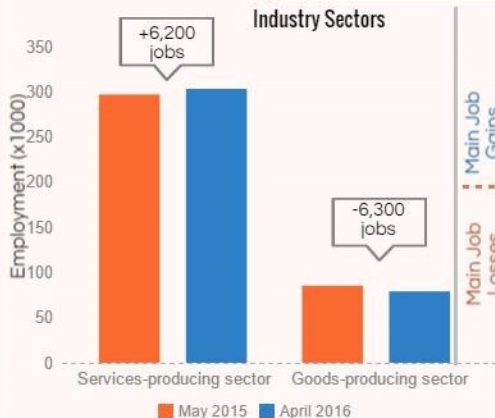
## Labour Market Characteristics



May 2016: Hamilton CMA had the 9th lowest unemployment rate of 34 CMAs. It was the 5th lowest in April 2015. The lowest unemployment rate in May was 2.8% in Peterborough, ON.

Characteristics are for the Hamilton CMA which includes Burlington, Grimsby and Hamilton. This data is seasonally adjusted and accounts for seasonal, cyclical and irregular movements.

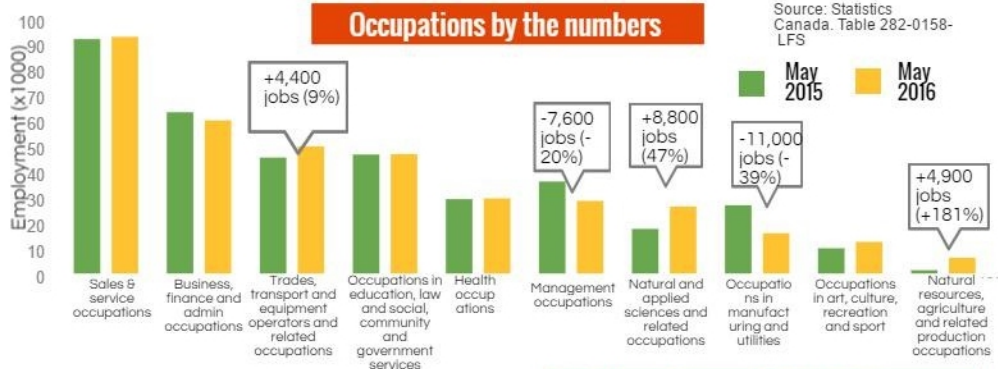
## Industries



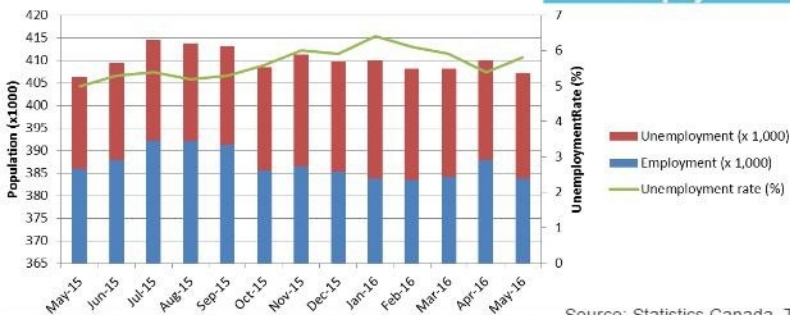
### Main Job Gains and Losses

Industry	May 2015	May 2016	Changes (x1000 people)
Information, culture and recreation	13.9	21.6	7.7
Accommodation and food services	17.8	20.9	3.1
Construction	29.6	25.4	-4.2
Educational services	39.5	34.6	-4.9
Finance, insurance, real estate, rental and leasing	29.9	24.1	-5.8

The industry with the largest change from May 2015 to May 2016 was Information, culture, and recreation. The industries with the most job losses were Financing, insurance and real estate, Education, Construction, and Wholesale/Retail Trade



Source: Statistics Canada. Table 282-0158- LFS



Unemployment rate in the Hamilton is on the rise and saw a .4 percentage point increase from April to May.

May also showed the smallest labour force all year (407,200 people)

Source: Statistics Canada. Table 282-0135- LFS

Workforce Planning Hamilton (WPH) is a local community planning organization that builds solutions to labour market issues by engaging stakeholders and working with partners.

