

Hamilton Labour Force Snapshot



Data from: Labour Force Survey, Statistics Canada
www.workforceplanninghamilton.ca

August 2016

Observation 1



Hamilton CMA's unemployment rate for August 2016 spiked to 6.2. Last year, the unemployment rate for August was a low 5.2.

Observation 2



The number of people working in Hamilton (CMA) dropped to 378 700 people (August 2016) from 392 100 (August 2015). That's a drop of -3%.

Observation 3



The industry group that saw the most losses in employment when compared to last year was Manufacturing (11,700 less people employed)

Unemployment rate: The number of people without work who are available for work, and are actively seeking work. It is a well-known indicator of labour-market health.

Labour Market Characteristics

Unemployment Rate

Aug 2015 Aug 2016

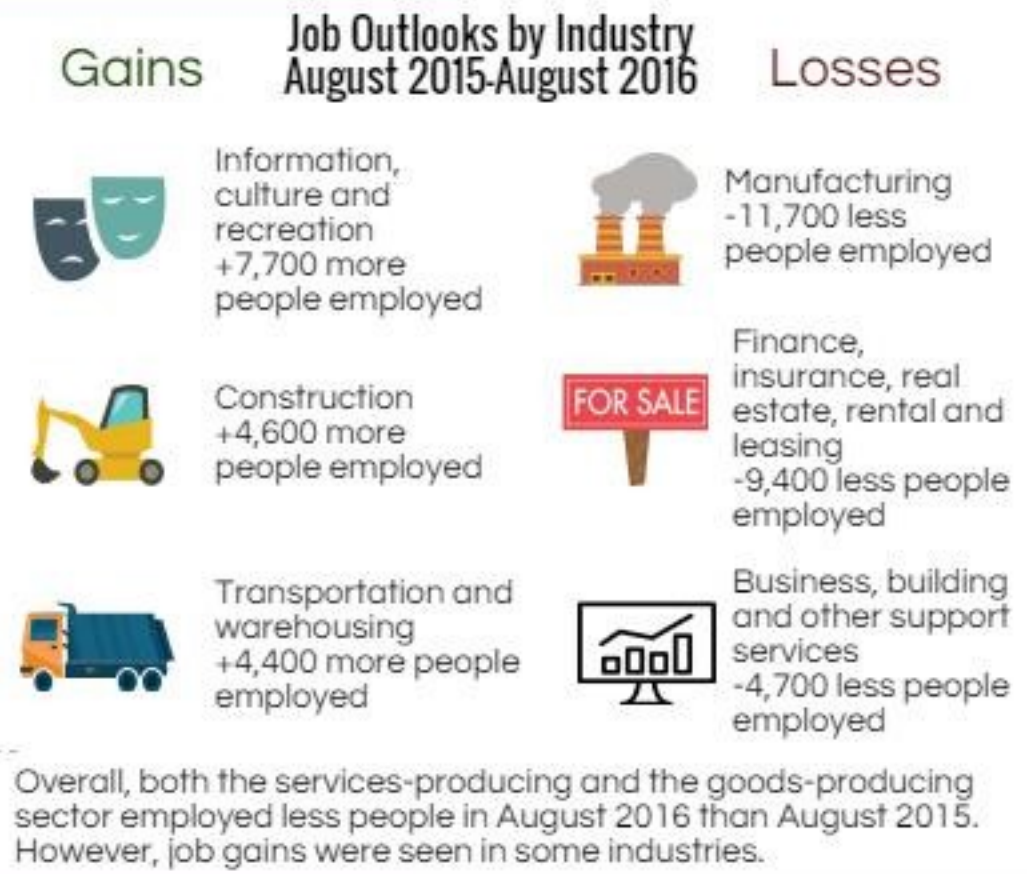
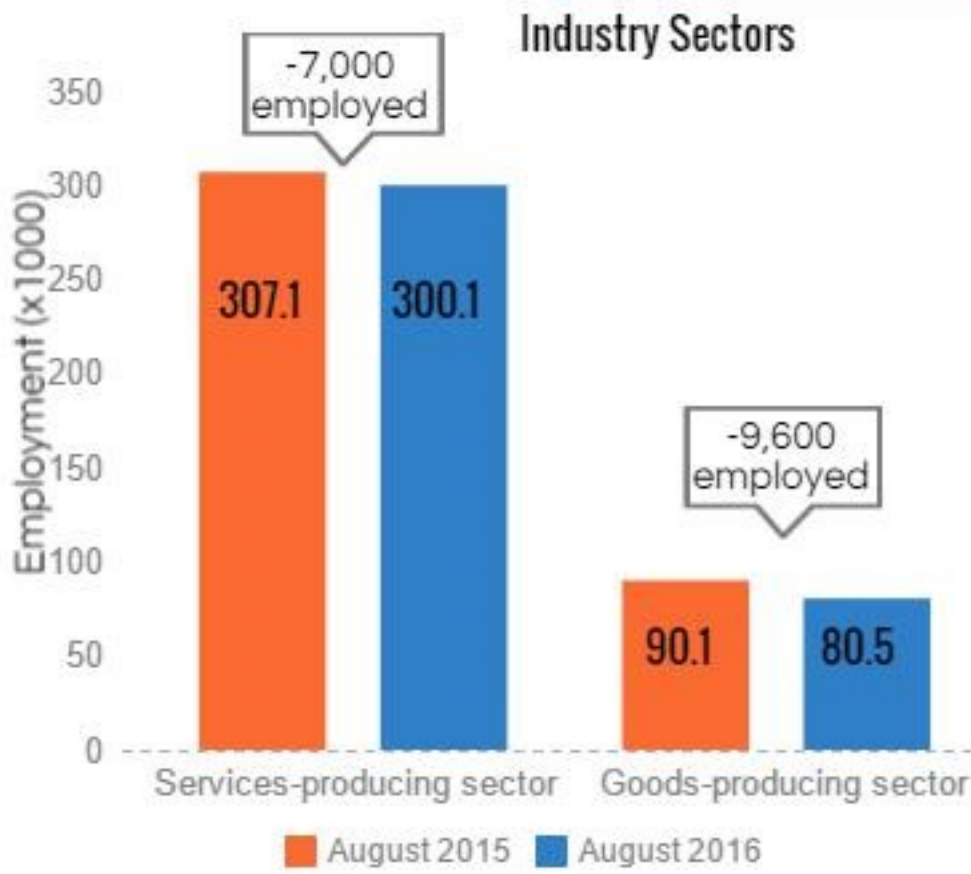


Hamilton CMA	August 2016	Change 2015-2016
Population (x 1,000)	650.6	1%
Labour force (x 1,000)	403.8	-2%
Employment (x 1,000)	378.7	-3%
Unemployment (x 1000)	25.2	16%
Unemployment rate (%)	6.2	1
Participation rate (%)	62.1	-2.3
Employment rate (%)	58.2	-2.8

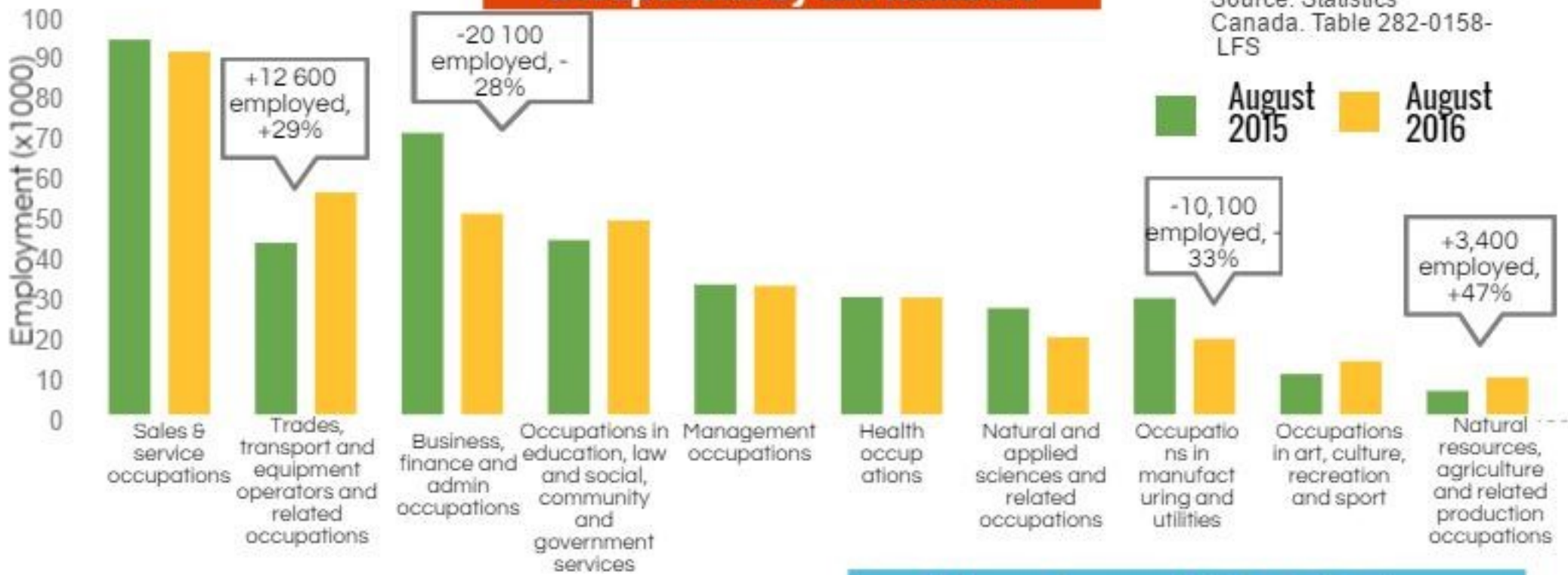
July 2016: Hamilton CMA had the 12th lowest unemployment rate of 34 CMAs. It was the 8th lowest in July 2015. The lowest unemployment rate in July this year was Quebec City's at 4.3.

Characteristics are for the Hamilton CMA which includes Burlington, Grimsby and Hamilton. This data is seasonally adjusted and accounts for seasonal, cyclical and irregular movements.

Industries



Occupations by the numbers



Unemployment Rate in Review



Source: Statistics Canada. Table 282-0135- LFS

Unemployment rate in the Hamilton CMA continues to rise steadily.

The number of people who are employed continues to decrease.

Workforce Planning Hamilton (WPH) is a local community planning organization that builds solutions to labour market issues by engaging stakeholders and working with partners.