

Hamilton Labour Force Snapshot



Data from: Labour Force Survey, Statistics Canada
www.workforceplanninghamilton.ca

June 2016

Observation 1



Hamilton CMA's unemployment rate for June 2016 spiked to 6.0. The unemployment rate was 5.3 last June.

Observation 2



There were 5,800 less people employed in June 2016 than June 2015.

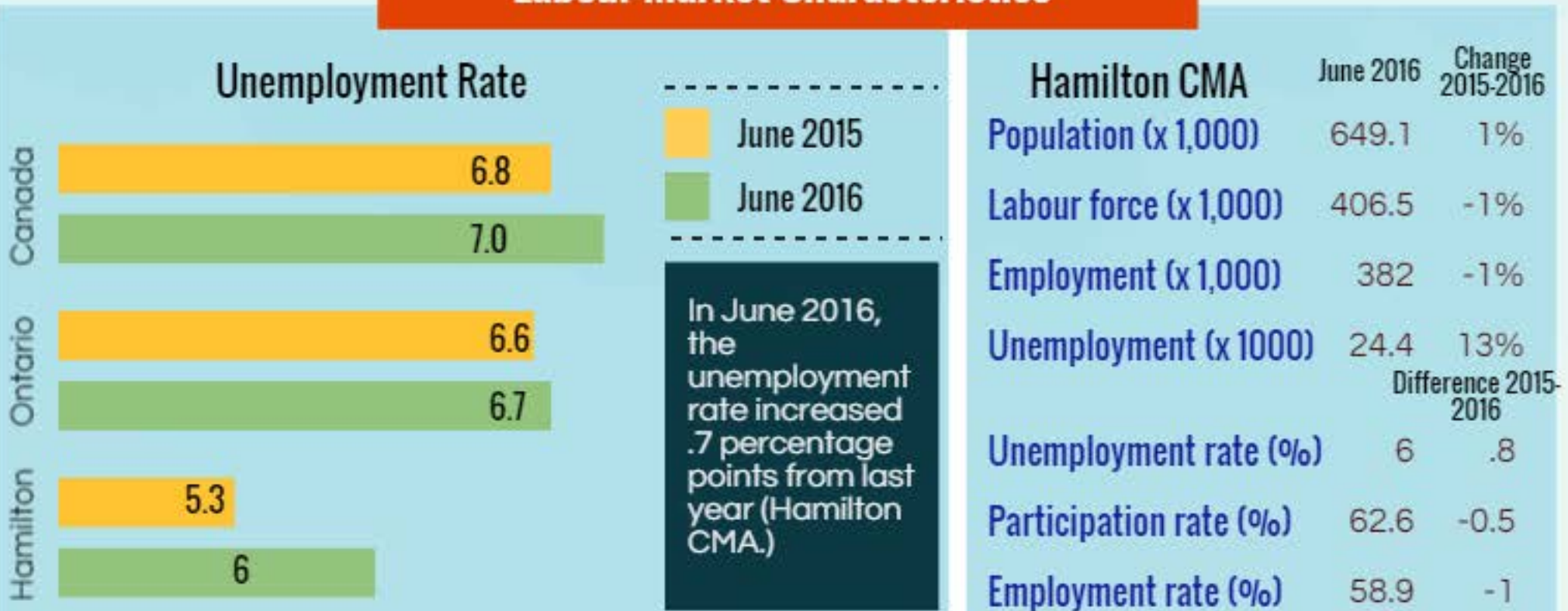
Observation 3



Hamilton CMA's unemployment rate remained lower than both Canada's and Ontario's.

Unemployment rate: The number of people without work who are available for work, and are actively seeking work. It is a well-known indicator of labour-market health.

Labour Market Characteristics

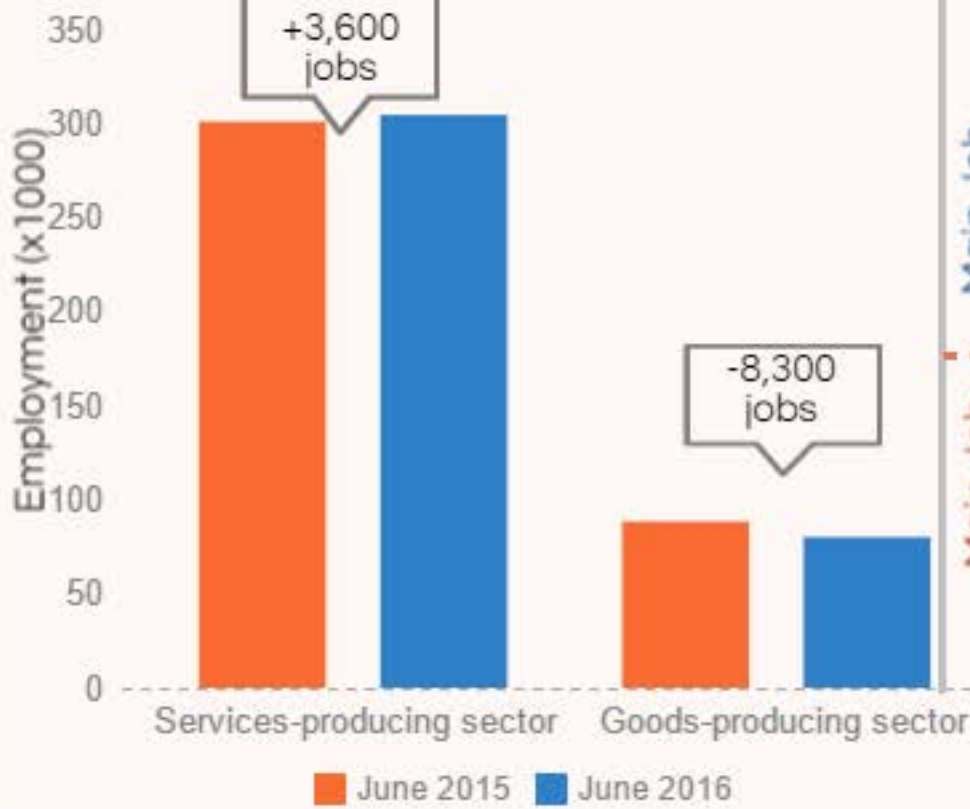


June 2016: Hamilton CMA had the 9th lowest unemployment rate of 34 CMAs. It was the 5th lowest in April 2015. The lowest unemployment rate in June was Quebec City's at 4.1.

Characteristics are for the Hamilton CMA which includes Burlington, Grimsby and Hamilton. This data is seasonally adjusted and accounts for seasonal, cyclical and irregular movements.

Industries

Industry Sectors

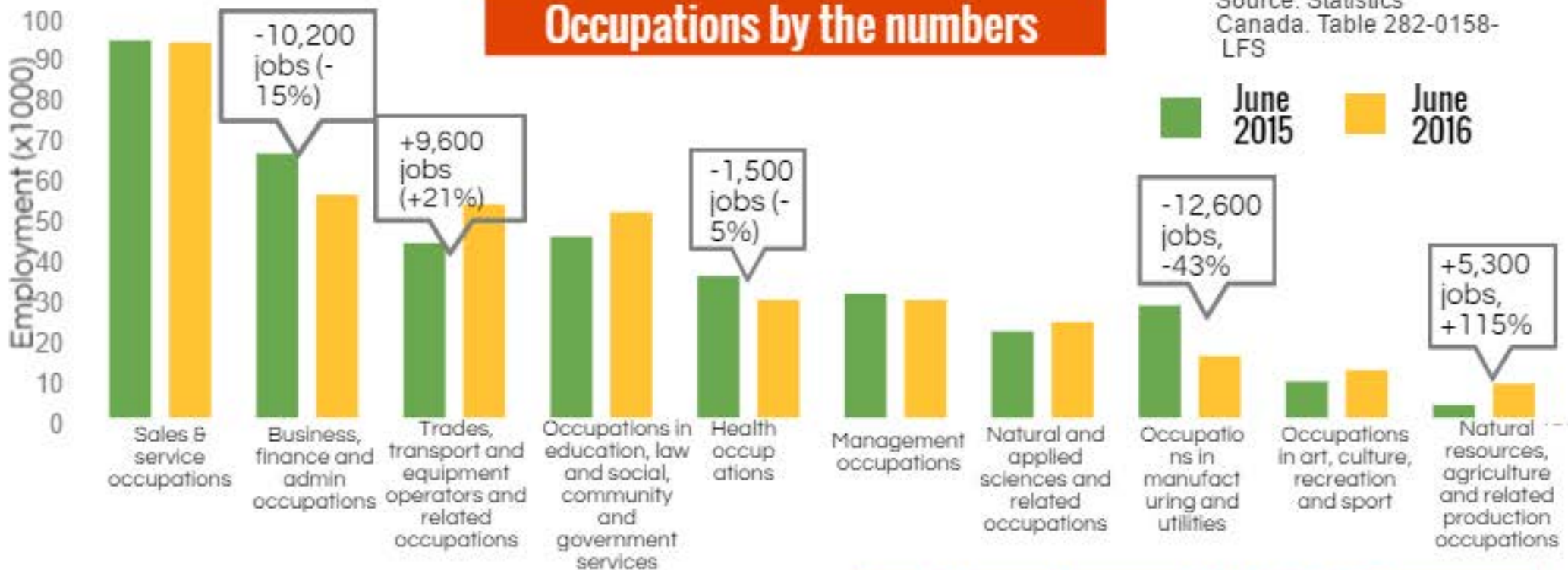


Main Job Gains and Losses

Industry	Jun-15	Jun-16	Difference
Information, culture and recreation	13.8	22.2	8.4
Other services (except public administration)	11.8	16.8	5
Educational services	38.4	33.9	-4.5
Manufacturing	50.5	43	-7.5
Finance, insurance, real estate, rental and leasing	30.6	22.4	-8.2

The industry with the largest change from June 2015 to June 2016 was Information, culture, and recreation. The industries with the most job losses were Financing, insurance and real estate, Education, Construction, and Manufacturing

Occupations by the numbers



Unemployment Rate in Review



Unemployment rate in the Hamilton CMA has been on the rise since April 2016.

The number of people who are employed continues to decrease.

Workforce Planning Hamilton (WPH) is a local community planning organization that builds solutions to labour market issues by engaging stakeholders and working with partners.