

Hamilton Labour Force Snapshot



Data from: Labour Force Survey, Statistics Canada
www.workforceplanninghamilton.ca

April 2016

Observation 1



Hamilton CMA's unemployment rate is on the decline. In April it was 5.4 while it was 6.4 in January.

Observation 2



There were 4,000 more people employed in April 2016 than in January 2016.

Observation 3



Hamilton CMA's unemployment rate remained lower than both Canada's and Ontario's.

Unemployment rate: The number of people without work who are available for work, and are actively seeking work. It is a well-known indicator of labour-market health.

Labour Market Characteristics

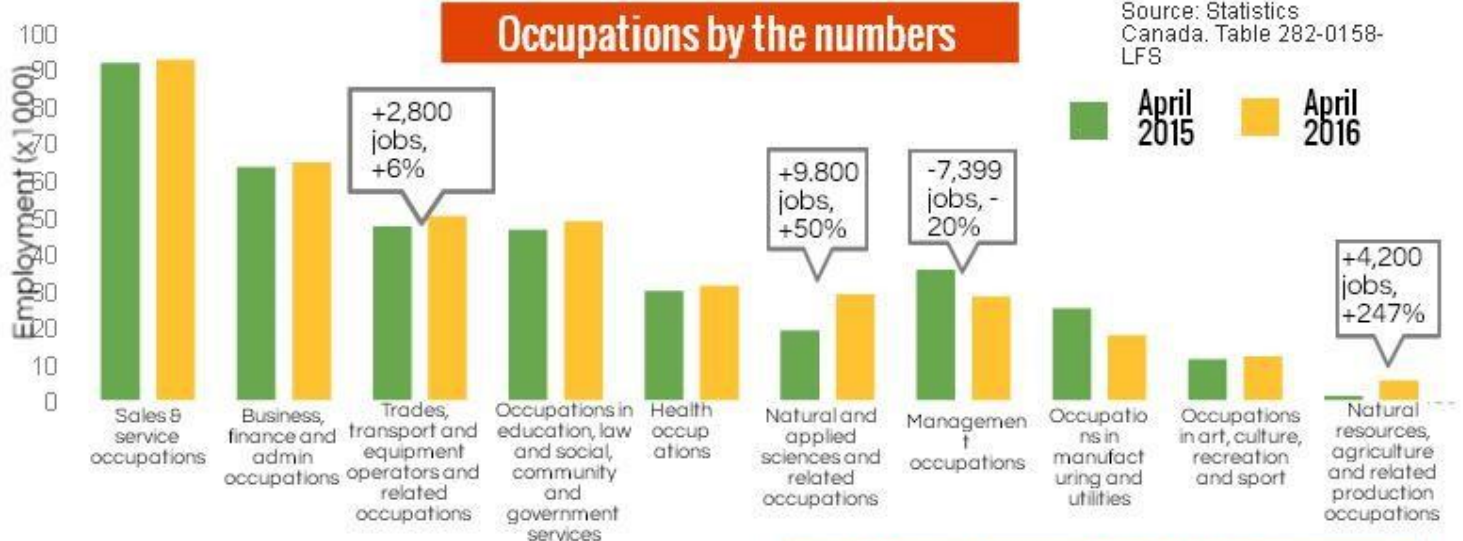
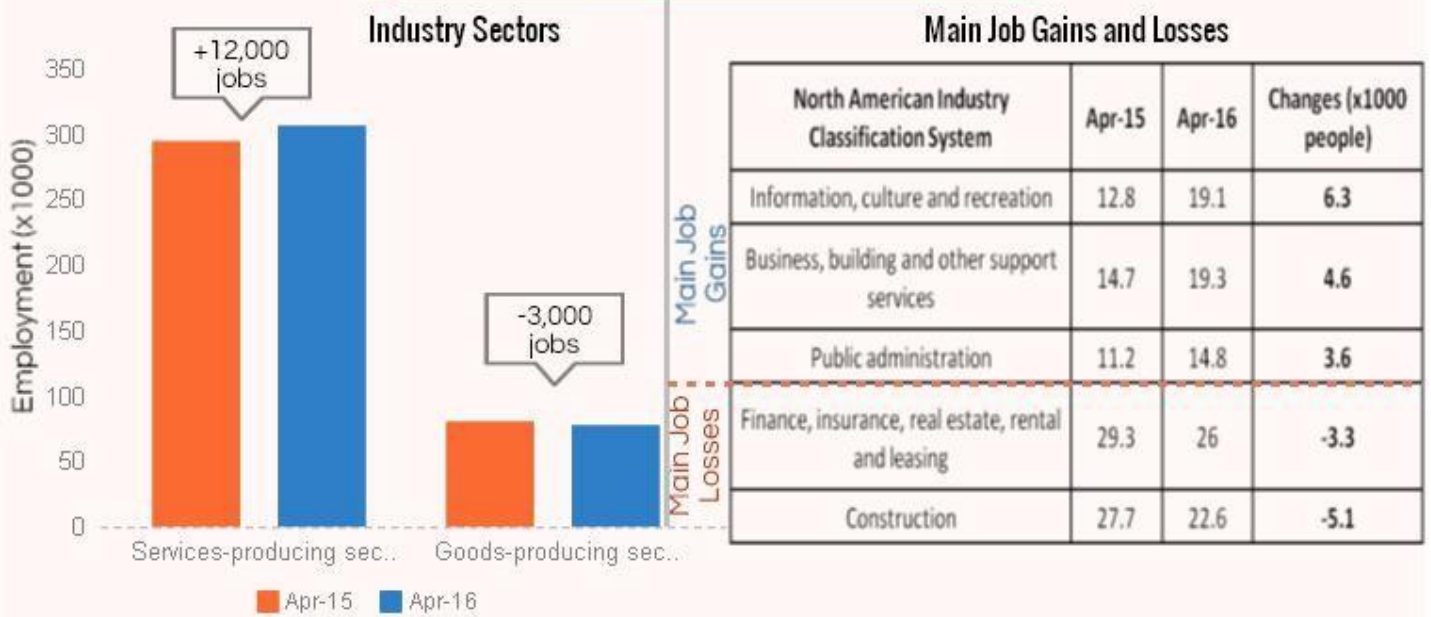


March 2016: Hamilton CMA had the 4th lowest unemployment rate of 34 CMAs. It was the 13th lowest in Jan 2015. The lowest unemployment rate was 3.2% in Peterborough, ON.

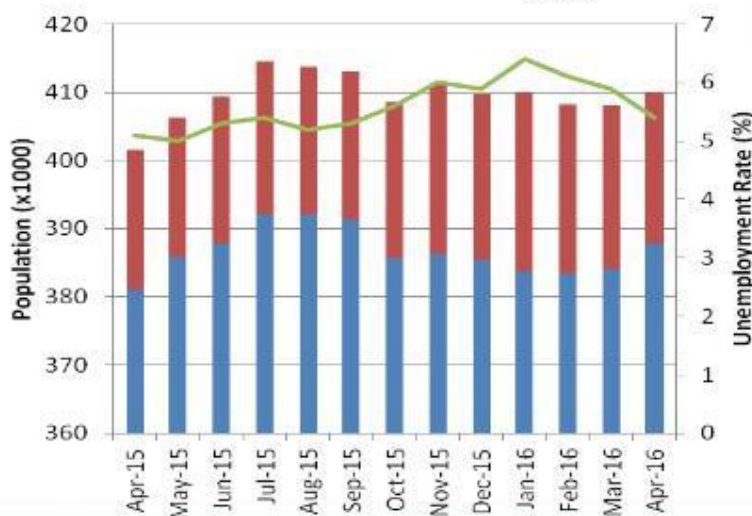
Characteristics are for the Hamilton CMA which includes Burlington, Grimsby and Hamilton. This data is seasonally adjusted and accounts for seasonal, cyclical and irregular movements.

Source: Statistics Canada.
Table 282-0130-LFS

Industries



Source: Statistics Canada. Table 282-0158-LFS



Unemployment Rate in Review

- Unemployment (x 1,000)
- Employment (x 1,000)
- Unemployment rate

Unemployment rate in the Hamilton CMA is low compared to the other CMAs and it's dropping.

The number of employed people increased by 3,700 people since March.

Source: Statistics Canada. Table 282-0135-LFS

Workforce Planning Hamilton (WPH) is a local community planning organization that builds solutions to labour market issues by engaging stakeholders and working with partners.